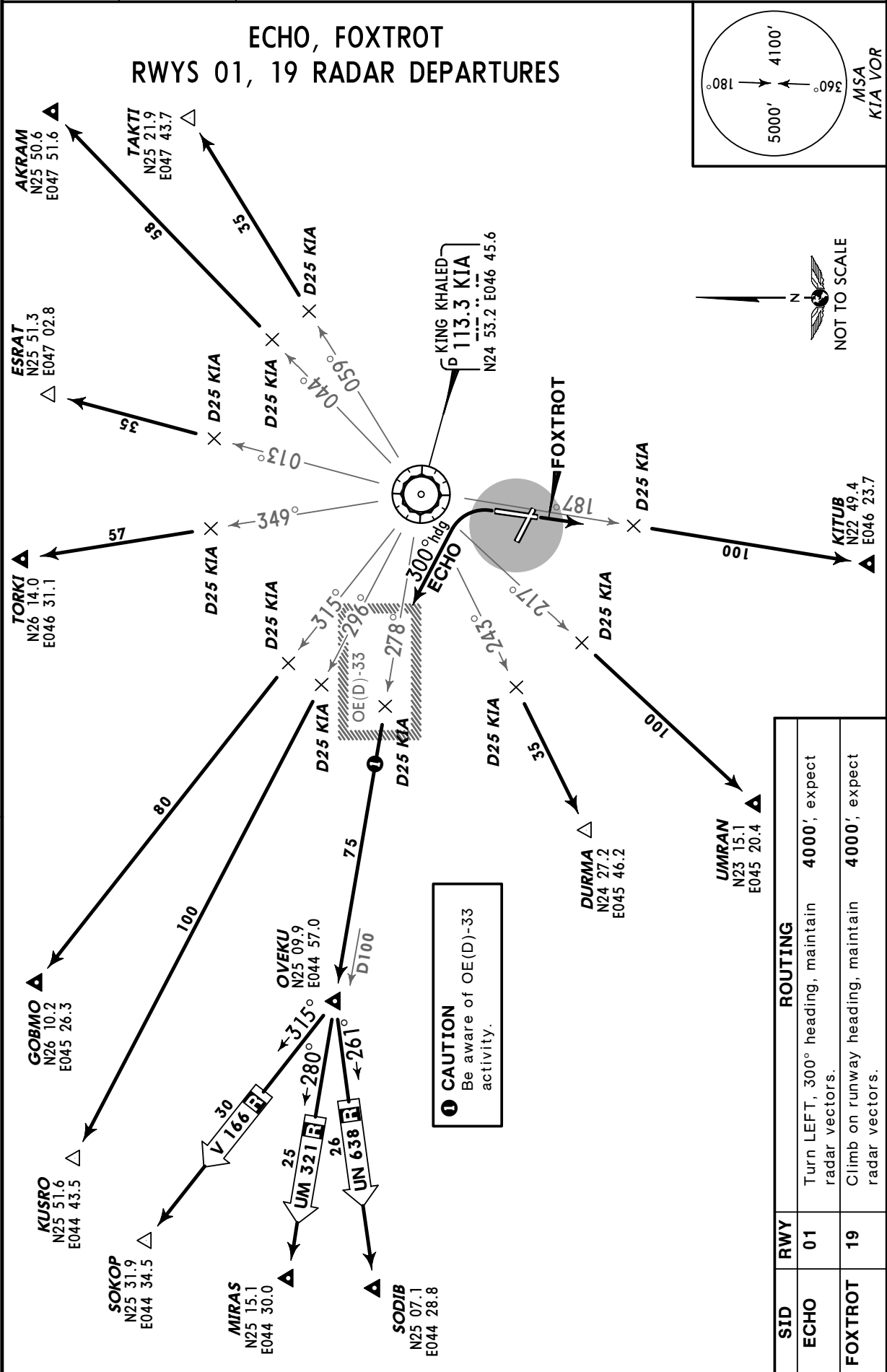


RIYADH Approach (R) 120.0	Apt Elev 2082'	Trans level: FL150 Trans alt: 13000' 1. Contact RIYADH Approach immediately after take-off. 2. ATC may issue a revised initial heading and/or altitude as a part of the SID procedure.
---------------------------------	-------------------	--

ECHO, FOXTROT
RWYS 01, 19 RADAR DEPARTURES



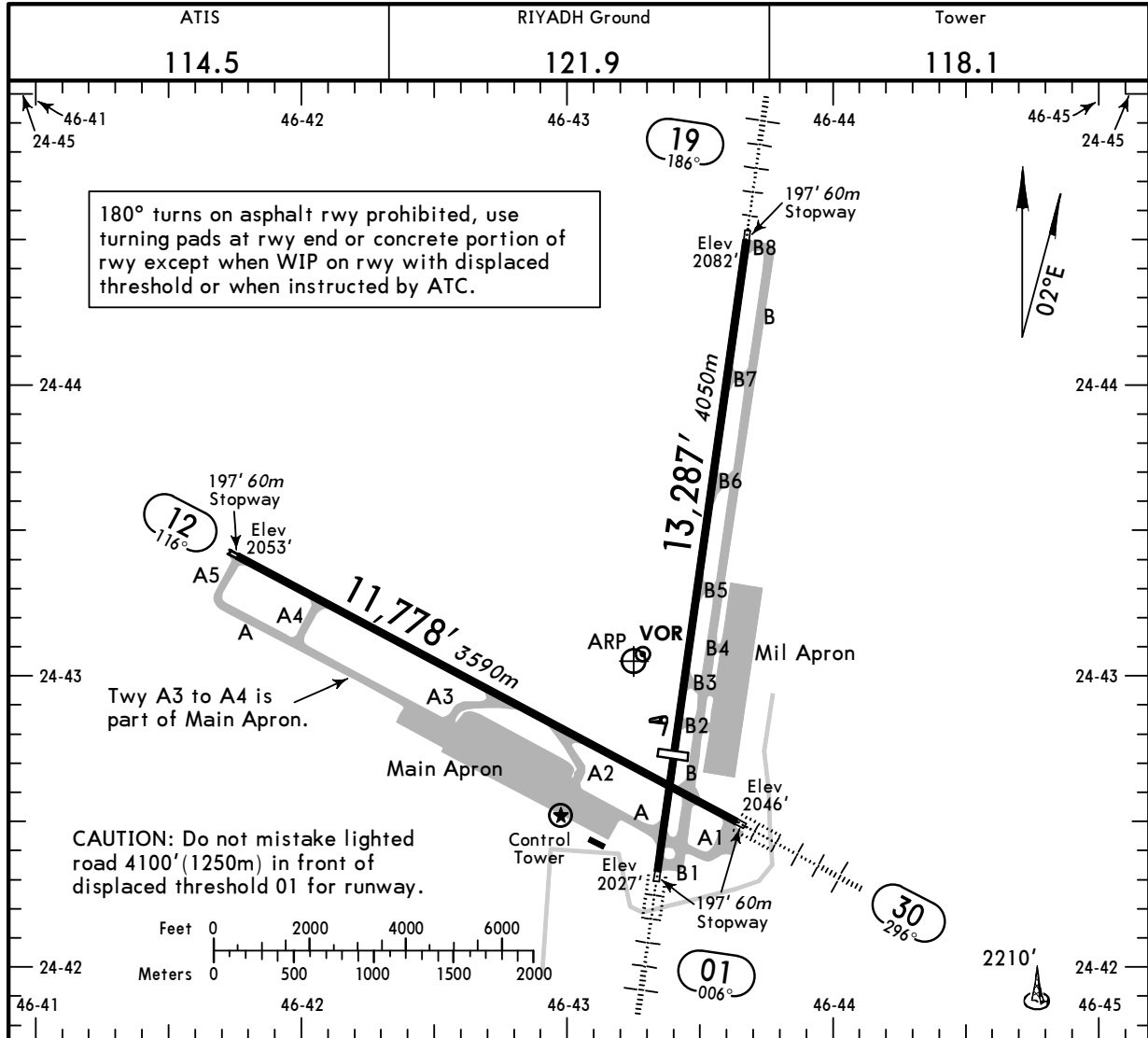
OERY

Apt Elev **2082'**
N 24 43.1 E046 43.3

JEPPESEN RIYADH, SAUDI ARABIA

11 SEP 09 **(10-9)** Eff 24 Sep

RIYADH AB



ADDITIONAL RUNWAY INFORMATION

RWY		USABLE LENGTHS			WIDTH
		Threshold	Landing Beyond Glide Slope	TAKE-OFF	
01 19	HIRL HIALS-II PAPI-L (angle 3.00°) HST-B6	10,827' 3300m	10,318' 3145m		148' 45m
	HIRL HIALS PAPI-L (angle 3.00°) HST-B3				
12 30	HIRL PAPI-L (angle 3.00°)				148' 45m
	HIRL HIALS-II PAPI-L (angle 3.00°)				

TAKE-OFF & IFR DEPARTURE PROCEDURE

	Rwys 01/30						Rwy 12			Rwy 19			FOR FILING AS ALTERNATE	
	Adequate Vis Ref	STD	With Min climb of 220'/NM to 2500'		Other	With Min climb of 220'/NM to 2600'		Other	Adequate Vis Ref	STD	Other	Precision	Non-Precision	
			Adequate Vis Ref	STD		Adequate Vis Ref	STD							
1 & 2 Eng	I 400m	1600m	I 400m	1600m	400'- 1600m	I 400m	1600m	600'- 1600m	A	600'- 3200m	800'- 3200m	800'- 3600m		
3 & 4 Eng		800m		800m			800m		C					

I 1 Eng acct: NA.

IFR DEPARTURE PROCEDURES

- RWY 01: Climb on rwy hdg to 2800' prior to turn.
- RWY 12/19: Climb on rwy hdg to 3000' prior to turn.
- RWY 30: Climb on rwy hdg to 3200' prior to turn.

A
M
E
N
D
4

CHANGES: Lights.

© JEPPESEN, 1998, 2009. ALL RIGHTS RESERVED.

STRAIGHT-IN RWY		A	B	C	D
01	ILS DME	2245' (200')	2245' (200')	2245' (200')	2245' (200')
		800m	800m	800m	800m
	ALS out	1200m	1200m	1200m	1200m
	LOC	2640' (595')	2640' (595')	2640' (595')	2640' (595')
		R1000m V800m	R1200m V800m	1600m	2000m
	ALS out	1600m	1600m	2400m	2800m
12	VOR DME	2640' (587')	2640' (587')	2640' (587')	2640' (587')
		1600m	1600m	2400m	2800m
19	VOR DME	2660' (578')	2660' (578')	2660' (578')	2660' (578')
		1200m	1200m	2400m	2800m
	ALS out	1600m	1600m	2400m	2800m
30	VOR DME	2760' (714')	2760' (714')	2760' (714')	2760' (714')
		R1000m V800m	R1200m V800m	2400m	2800m
	ALS out	1600m	1600m	3200m	3600m

CIRCLE-TO-LAND ①	100 KT	135 KT	180 KT	205 KT
	2700' (618') ②	2700' (618') ②	2800' (718')	2800' (718')
	V1600m	V1600m	V3200m	V3600m

① Not authorized South of rwy 12/30 and West of rwy 01/19.

② After VOR DME 30: 2760' (678').

TAKE-OFF RWY 01, 30

	RL	Adequate Vis Ref (DAY only)	STD
1 Eng	NOT AUTHORIZED	NOT AUTHORIZED	1600m
2 Eng			
3 & 4 Eng	400m	500m	800m

TAKE-OFF RWY 12

With Mim climb of 220'/NM to 2500'				
	RL	Adequate Vis Ref (DAY only)	STD	Other
1 Eng	NOT AUTHORIZED	NOT AUTHORIZED	1600m	400' - 1600m
2 Eng				
3 & 4 Eng	400m	500m	800m	

OERY

JEPPESEN
19 JUN 98 (10-9X1)

JAA MINIMUMS
RIYADH, SAUDI ARABIA
RIYADH AB

TAKE-OFF RWY 19

With Min climb of 220'/NM to 2600'				
	RL	Adequate Vis Ref (DAY only)	STD	Other
1 Eng	NOT AUTHORIZED	NOT AUTHORIZED	1600m	600'- 1600m
2 Eng				
3 & 4 Eng	400m	500m	800m	

For SAUDI ARABIA State Alternate minimums which are always higher than JAR-OPS 1 refer to apt chart.

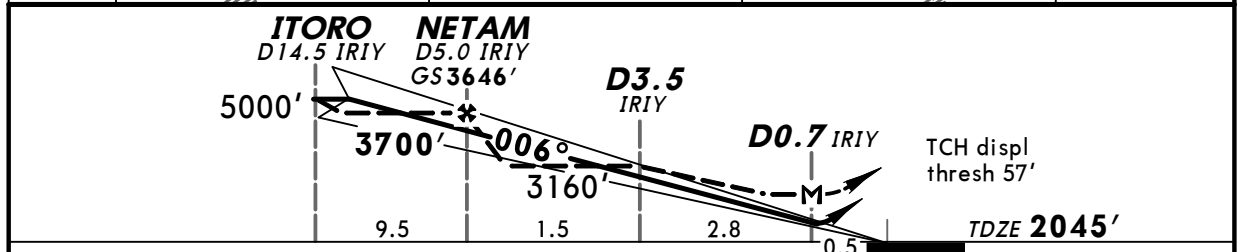
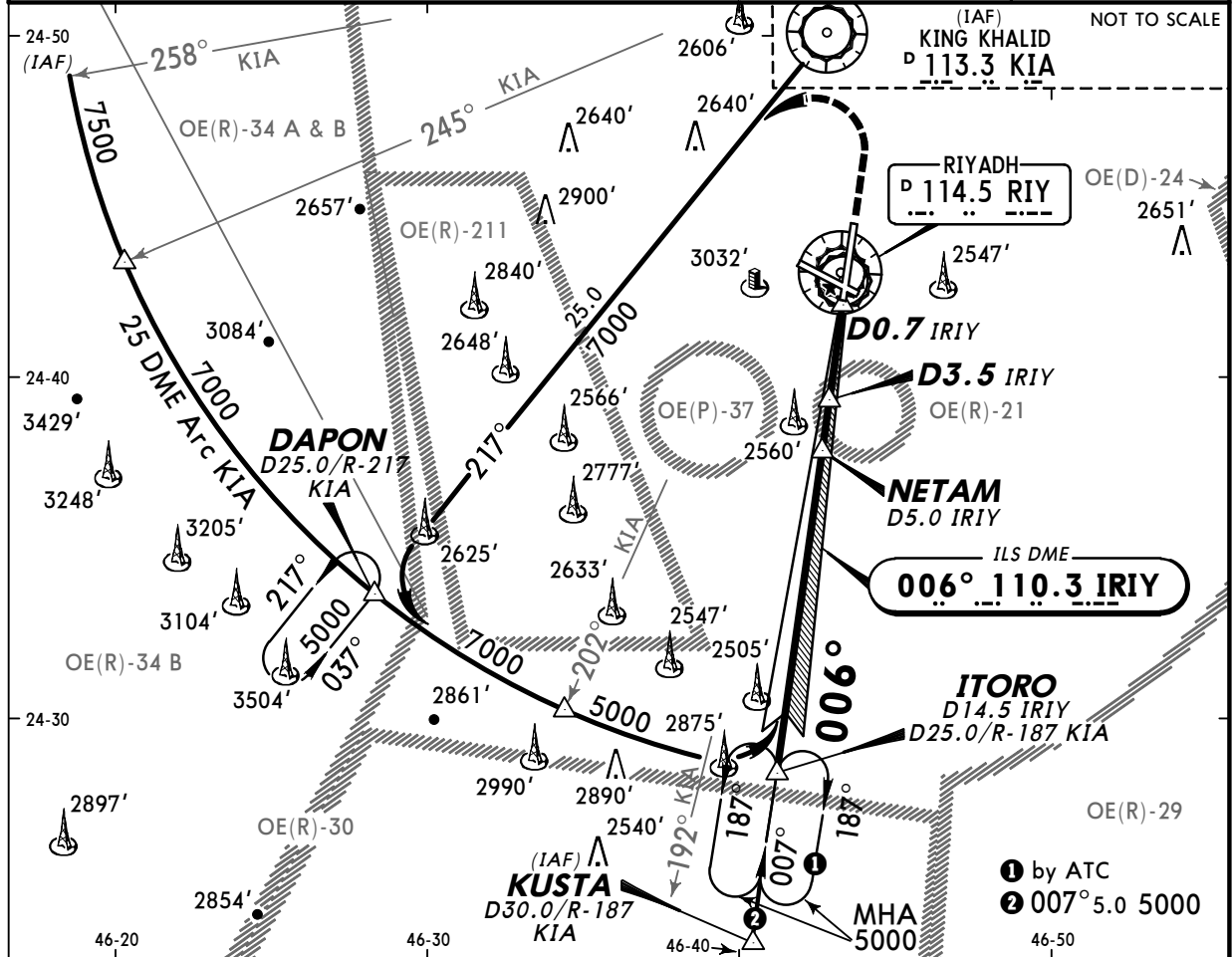
CHANGES: See other side.

© JEPPESEN SANDERSON, INC., 1997. ALL RIGHTS RESERVED.

**OERY
RIYADH AB**

ATIS 114.5	RIYADH Control (APP) 126.0	RIYADH Approach (R) 120.0	RIYADH Tower 118.1	Ground 121.9
LOC IRIY 110.3	Final Apch Crs 006°	GS NETAM 3646' (1601')	ILS DA(H) 2245' (200')	Apt Elev 2082' TDZE 2045'
<p>MISSED APCH: Climb to 3500', then climbing turn LEFT to 5000', intercept and proceed outbound R-217 KIA to DAPON/D25.0 KIA and hold, or as directed.</p> <p>Alt Set: hPa TDZ Elev: 73 hPa Trans level: FL 150 Trans alt: 13000'</p> <p>1. CAUTION: Under high temperature conditions pressure altimeter may indicate lower than published altitude. 2. CAUTION: Do not mistake lighted road 0.7 NM in front of displ thresh rwy 01 for rwy. Thresh rwy 01 displ 2461' (750m). 3. Intense flight training activity SAT-THU 0300-2300.</p>				<p>MSA KIA VOR</p>

BRIEFING STRIP™



Gnd Speed-Kts	70	90	100	120	140	160	HIALS-II PAPI 3500' 5000' KIA onto 113.3 LT R-217	
GS	3.00°	377	484	538	646	753		861
MAP at D0.7 IRIY								

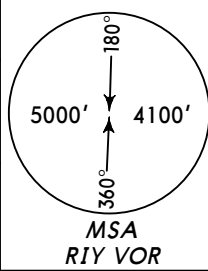
STRAIGHT-IN LANDING RWY 01				CIRCLE-TO-LAND (PANS OPS)			
ILS DA(H) 2245' (200')		LOC (GS out) MDA(H) 2640' (595')		Not authorized South of rwy 12/30 and West of rwy 01/19			
FULL	ALS out	ALS out	ALS out	MDA(H)			
A		800m	1600m	Max Kts			
B	800m	1200m		100	2700' (618')	1600m	
C				135			
				180	2800' (718')	3200m	
D				205	2800' (718')	3600m	

AMEND 10

OERY
RIYADH AB

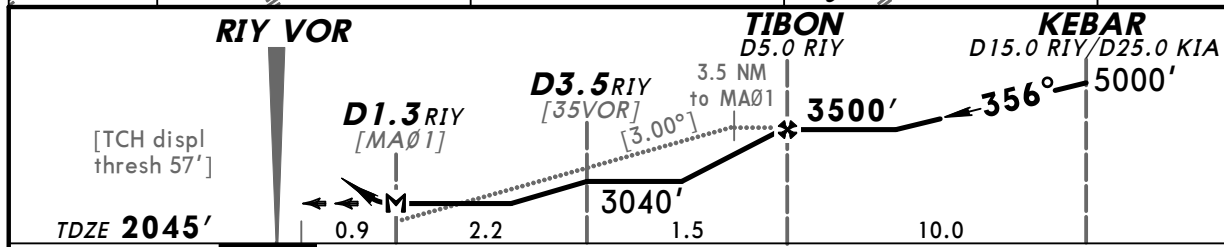
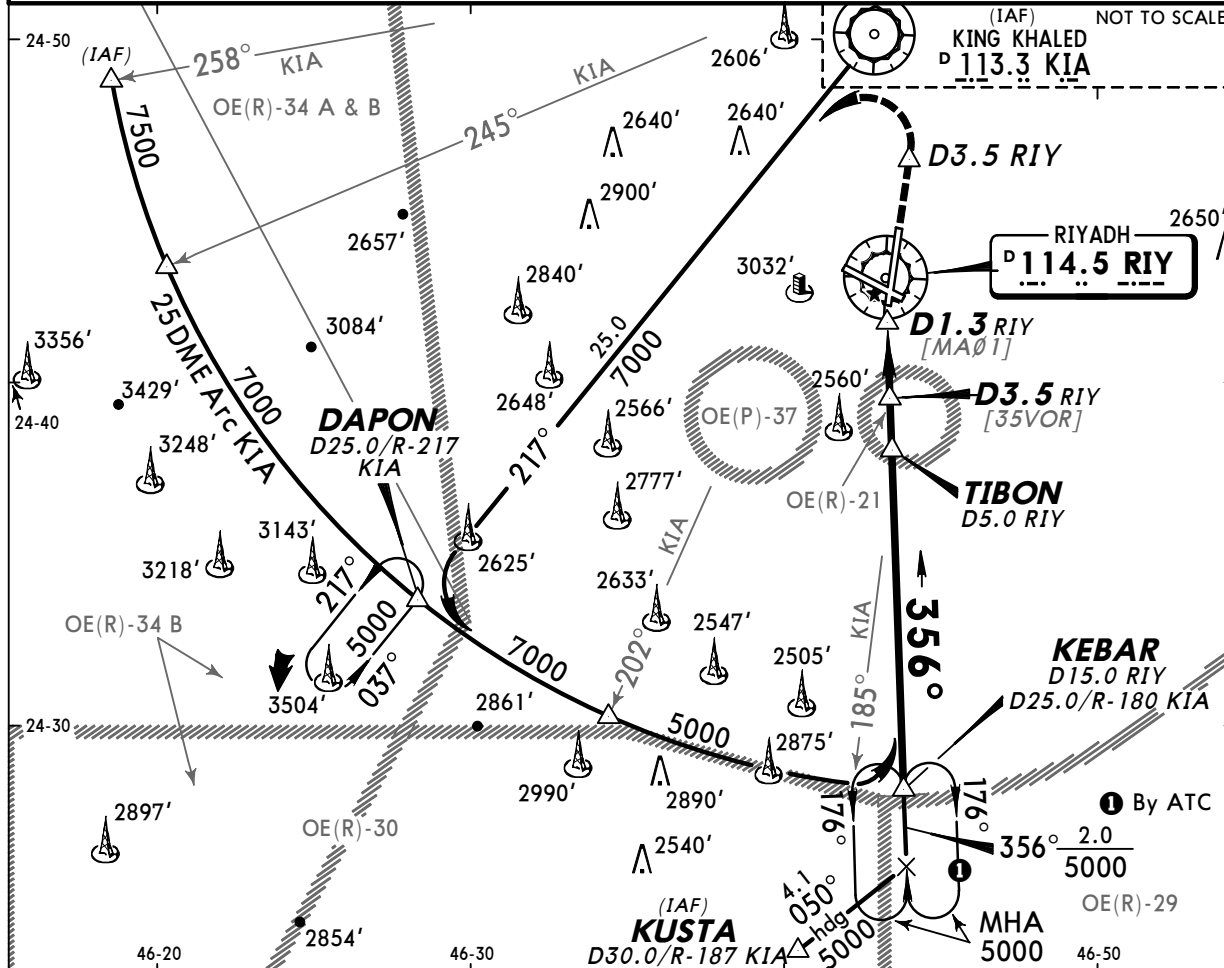
JEPPESEN RIYADH, SAUDI ARABIA
20 JAN 06 (13-1)
VOR DME Rwy 01

ATIS 114.5	RIYADH Control (APP) 126.0	RIYADH Approach (R) 120.0	RIYADH Tower 118.1	Ground 121.9
VOR RIY 114.5	Final Apch Crs 356°	Minimum Alt TIBON 3500' (1455')	MDA(H) 2640' (595')	Apt Elev 2082' TDZE 2045'

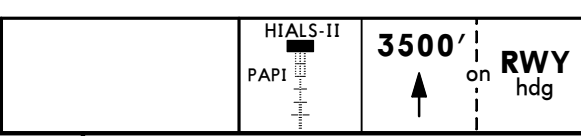


MISSED APCH: Climb on rwy heading to 3500', at D3.5 RIY climbing turn LEFT to 5000' intercept and proceed outbound R-217 KIA to DAPON/
D25.0 KIA and hold, or as directed.

Alt Set: hPa TDZ Elev: 73 hPa Trans level: FL 150 Trans alt: 13000'
1. CAUTION: Do not mistake lighted road 0.7 NM in front of displaced thresh rwy 01 for rwy 01. Thresh rwy 01 displaced 2461'(750m). 2. Intense flight training activity SAT-THU 0300-2300.



Gnd speed-Kts	70	90	100	120	140	160
Descent angle [3.00°]	372	478	531	637	743	849
MAP at D1.3 RIY						



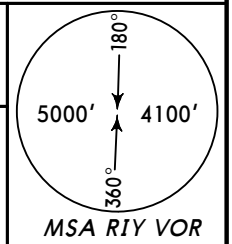
STRAIGHT-IN LANDING RWY 01			CIRCLE-TO-LAND (PANS OPS)	
MDA(H) 2640' (595')			Not authorized South of rwy 12/30 and West of rwy 01/19	
	ALS out	Max Kts	MDA(H)	
A		100		
B	800m	135	2700' (618')	1600m
C	1600m	180	2800' (718')	3200m
D	2000m	205	2800' (718')	3600m

CHANGES: Tower frequency.

© JEPPESEN SANDERSON, INC., 1998, 2006. ALL RIGHTS RESERVED.

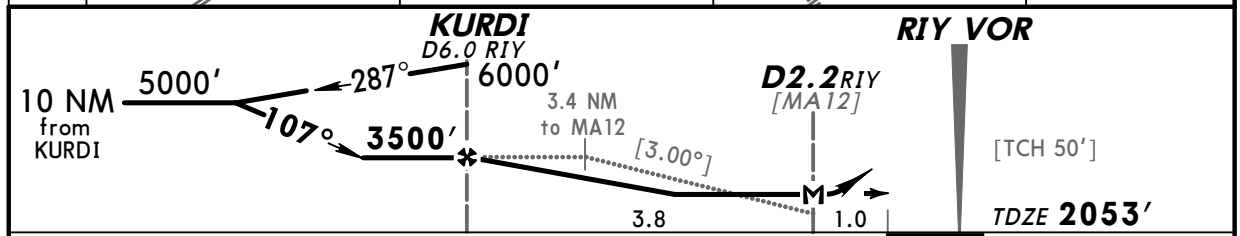
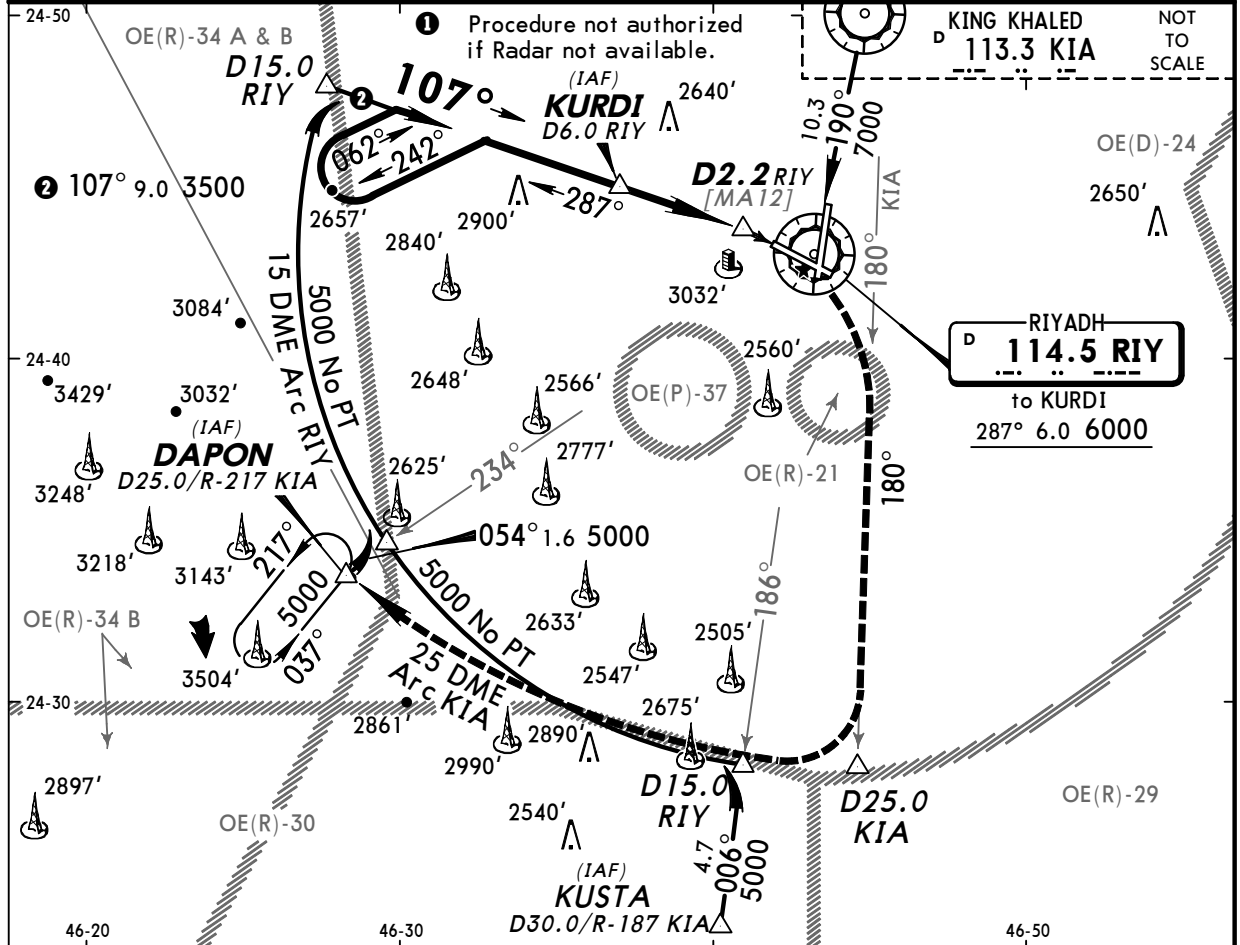
ATIS 114.5	RIYADH Control (APP) 126.0	RIYADH Approach (R) 120.0	RIYADH Tower 118.1	Ground 121.9
---------------	-------------------------------	------------------------------	-----------------------	-----------------

VOR RIY 114.5	Final Apch Crs 107°	Minimum Alt KURDI 3500' (1447')	MDA(H) 2640' (587')	Apt Elev 2082' TDZE 2053'
----------------------------	----------------------------------	---	-------------------------------	-------------------------------------



MISSED APCH: Climb to 3500', then climbing turn RIGHT to 5000' on R-180 KIA outbound to D25.0 KIA, then turn RIGHT via 25 DME Arc KIA to DAPON/D25.0 KIA and hold, or as directed.

Alt Set: hPa TDZ Elev: 73 hPa Trans level: FL 150 Trans alt: 13000'
 1. CAUTION: Do not mistake lighted road 0.7 NM in front of displaced thresh rwy 01 for rwy. Thresh rwy 01 displaced 2461'(750m). 2. Intense flight training activity SAT-THU 0300-2300.

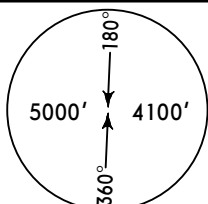


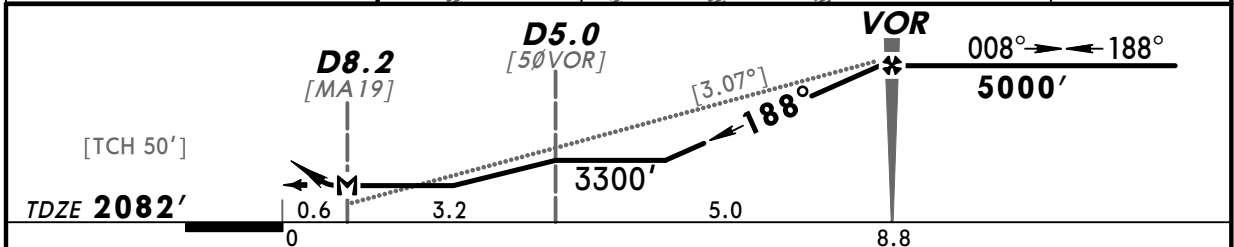
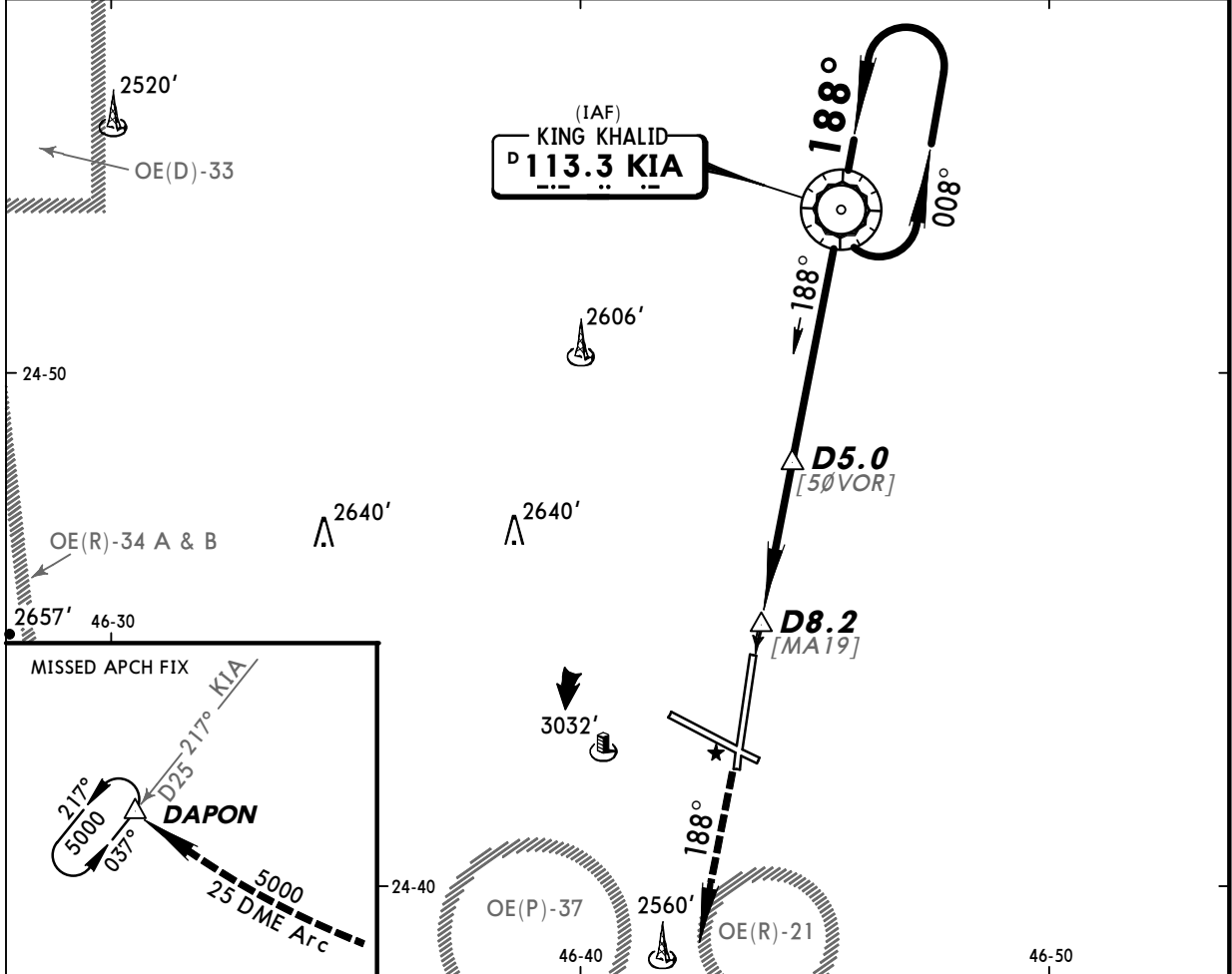
Gnd speed-Kts	70	90	100	120	140	160	VASI	3500'	5000'	KIA via 113.3 R-180
Descent angle [3.00°]	372	478	531	637	743	849				
MAP at D2.2 RY										


STRAIGHT-IN LANDING RWY 12		CIRCLE-TO-LAND (PANS OPS)	
MDA(H) 2640' (587')		Not authorized South of rwy 12/30 and West of rwy 01/19	
A		Max Kts	
B	1600m	100	2700'(618') 1600m
C	2400m	135	2800'(718') 3200m
D	2800m	180	2800'(718') 3600m

OERY
RIYADH AB

BRIEFING STRIP™

ATIS 114.5	RIYADH Control (APP) 126.0	RIYADH Approach (R) 120.0	RIYADH Tower 118.1	Ground 121.9
VOR KIA 113.3	Final Apch Crs 188°	Minimum Alt VOR 5000' (2918')	MDA(H) 2660' (578')	Apt Elev 2082' TDZE 2082'
<p>MISSED APCH: Climb outbound on R-188 to D25.0, then climbing turn RIGHT to 5000' via 25 DME Arc clockwise to DAPON and hold, or as directed.</p> <p>Alt Set: hPa TDZ Elev: 74 hPa Trans level: FL 150 Trans alt: 13000'</p> <p>1. CAUTION: Do not mistake lighted road 0.7 NM in front of displaced thresh rwy 01 for rwy. Thresh rwy 01 displaced 2461' (750m). 2. Intense flight training activity SAT-THU 0300-2300.</p>				 <p>MSA KIA VOR</p>



Gnd speed-Kts	70	90	100	120	140	160	 <p>D25.0 KIA on 113.3 R-188</p>
Descent angle [3.07°]	380	489	543	652	760	869	
MAP at D8.2							

STRAIGHT-IN LANDING RWY 19			CIRCLE-TO-LAND	
MDA(H) 2660' (578')			Not authorized South of rwy 12/30 and West of rwy 01/19	
		ALS out	Max Kts	MDA(H)
A	1200m	1600m	100	2700' (618') 1600m
B			135	
C	2400m		180	2800' (718') 3200m
D	2800m		205	2800' (718') 3600m

AMEND 4

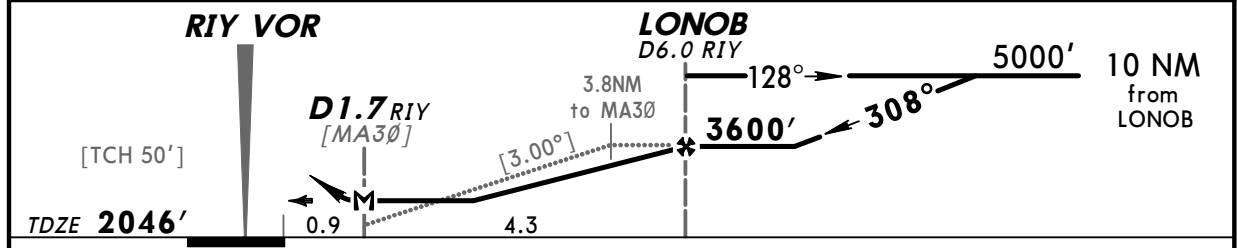
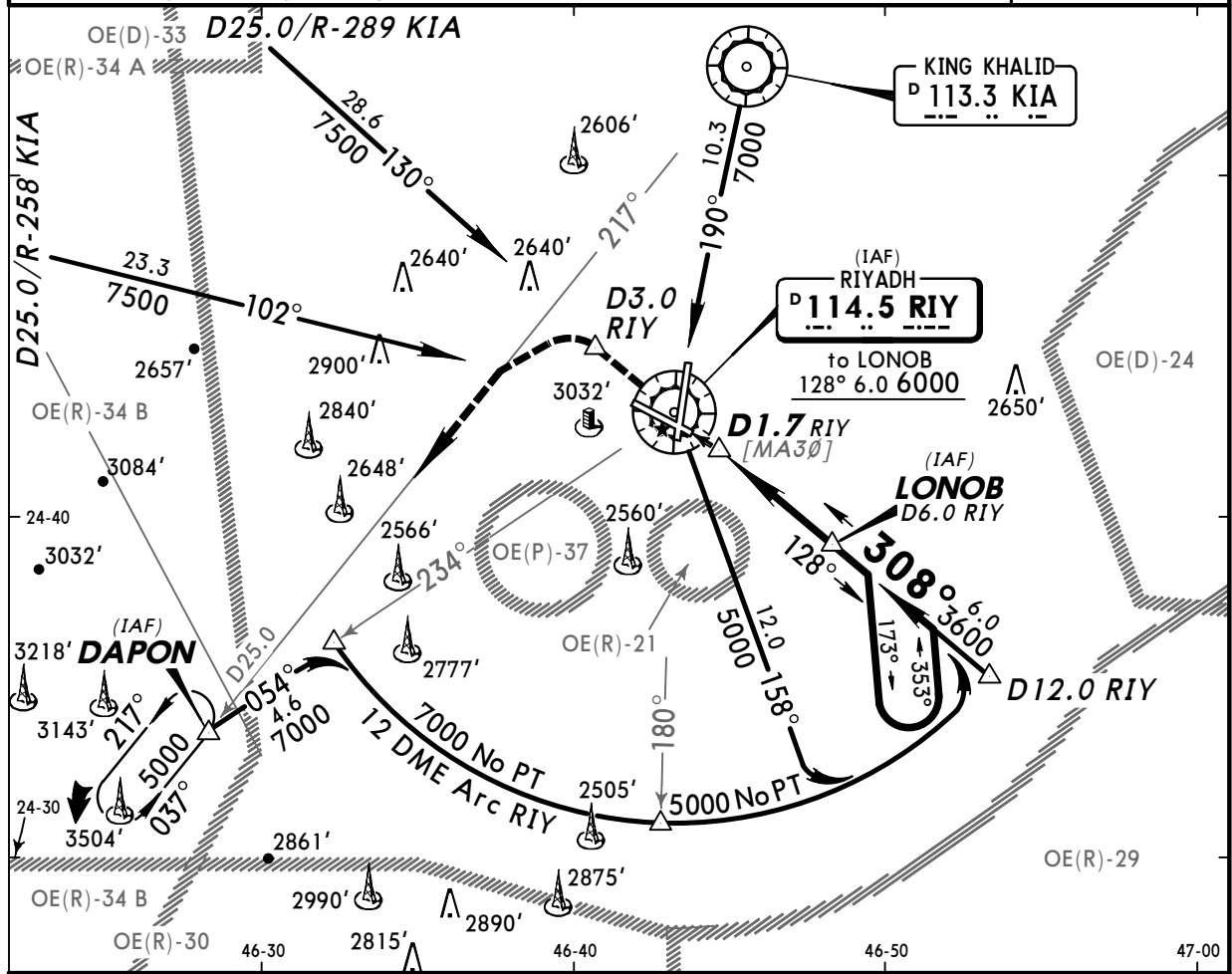
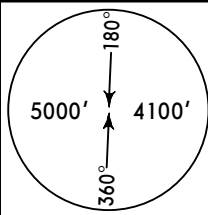
OERY
RIYADH AB

ATIS 114.5	RIYADH Control (APP) 126.0	RIYADH Approach (R) 120.0	RIYADH Tower 118.1	Ground 121.9
VOR RIY 114.5	Final Apch Crs 308°	Minimum Alt LONOB 3600' (1554')	MDA(H) 2760' (714')	Apt Elev 2082' TDZE 2046'

MISSED APCH: Climb direct to RIY VOR, then climb on R-308 RIY to D3.0 RIY, turn LEFT to intercept and proceed outbound R-217 KIA to DAPON at 5000' and hold, or as directed.

Alt Set: hPa TDZ Elev: 73 hPa Trans level: FL 150 Trans alt: 13000'

1. CAUTION: Do not mistake lighted road 0.7 NM in front of displaced thresh rwy 01 for rwy. Thresh rwy 01 displaced 2461' (750m).
2. Intense flight training activity SAT-THU 0300-2300.



Gnd speed-Kts	70	90	100	120	140	160	HIALS-II VASI VASI	RIY 114.5	D3.0 RIY
Descent angle [3.00°]	372	478	531	637	743	849			
MAP at D1.7 RIY									

STRAIGHT-IN LANDING RWY 30			CIRCLE-TO-LAND		
MDA(H) 2760' (714')			Not authorized South of rwy 12/30 and West of rwy 01/19		
		ALS out	Max Kts	MDA(H)	
A	800m	1600m	100	2760'(678')	1600m
B			135		
C	2400m	3200m	180	2800'(718')	3200m
D	2800m	3600m	205	2800'(718')	3600m